



GMT MONTHLY MEMBERSHIP PROGRESS REPORT

Results as of: 6/30/2019

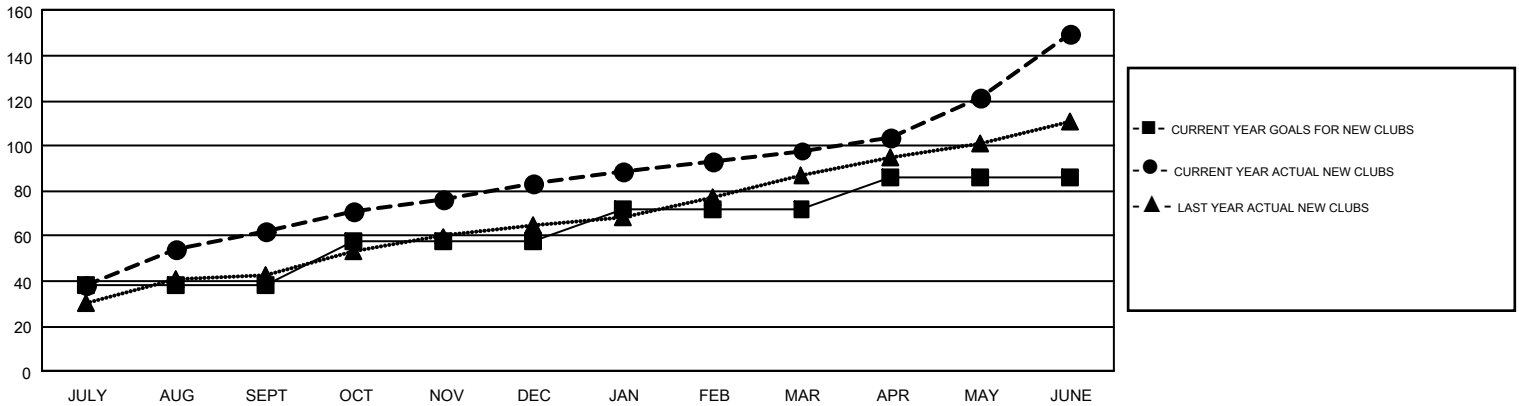
GMT Constitutional Area 6, Group G

GMT: ANIL TULSYAN

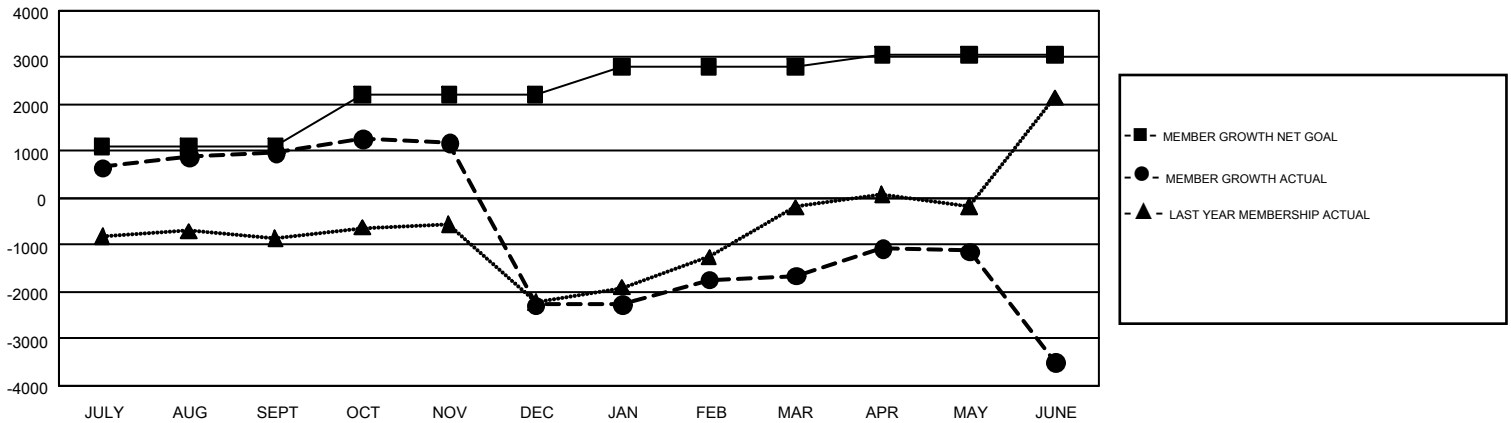
REPORT DOES NOT INCLUDE CLUBS IN UNDISTRICTED AREAS.

Clubs				Members			
RESULTS FOR 2018-2019				RESULTS FOR 2018-2019			
QUARTER	NEW CLUB GOAL	NEW CLUBS	DROPPED CLUBS	QUARTER	MEMBER GROWTH NET GOAL	MEMBER GROWTH ACTUAL	DROPPED MEMBERS ACTUAL (including transfers)
JULY/AUG/SEPT	38	62	4	JULY/AUG/SEPT	1,107	2,382	1,174
OCT/NOV/DEC	20	21	82	OCT/NOV/DEC	1,100	1,111	4,243
JAN/FEB/MAR	14	15	17	JAN/FEB/MAR	606	2,687	1,126
APR/MAY/JUNE	14	52	33	APR/MAY/JUNE	246	4,087	5,415

GOALS AND ACTUAL NEW CLUBS CUMULATIVE



GOALS AND ACTUAL MEMBERS CUMULATIVE



DROPPED CLUBS: 136	1,024 CLUBS OF 1,730 ADDED 1 OR MORE NEW MEMBERS	GENDER DISTRIBUTION MALE 37,499 (69.59%) FEMALE 16,383 (30.41%)
DROPPED MEMBERS DECEASED 139 CLUB CANCELLED 3,331 OTHER 8,486 <hr/> TOTAL 11,956	CLICK HERE FOR CUMULATIVE MEMBERSHIP DATA	TOTAL FAMILY UNIT MEMBERS 24,897 FAMILY MEMBERS PAYING HALF DUES 14,233